



SmarTube 2.71 Installation Manual

Barbierato Marco

Thermal Analyst - Technology Dept. - Heat Exchanger and Pressure Vessels

2020-01-30

Revision: 0: 20200130

INDEX

INTRODUCTION	1
INSTALLATION	1
UNINSTALLATION	7

INTRODUCTION

SmarTube is a calculation tool for Thermal selection (design/rating mode) of BITZER Shell and Tube Evaporators and Condensers operating in Air Conditioning and Refrigeration applications.

Note: you need to have "administrator privileges" to install / uninstall the program.

INSTALLATION

- 1 If you received the program in a .zip format, unzip the files in a temporary working folder on your pc.
- 2 In that folder, you should see the files listed in the picture below (fig. 1). Right-click on " setup.exe" and, from the menu, select " Run as administrator" to execute the installation program (fig. 2).

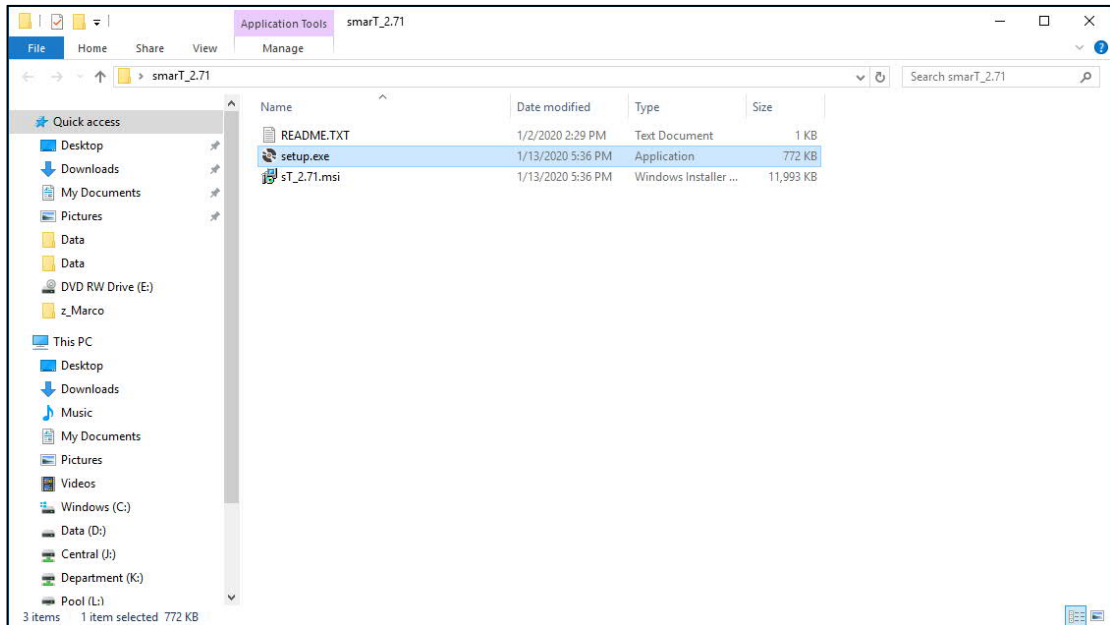


Fig. 1

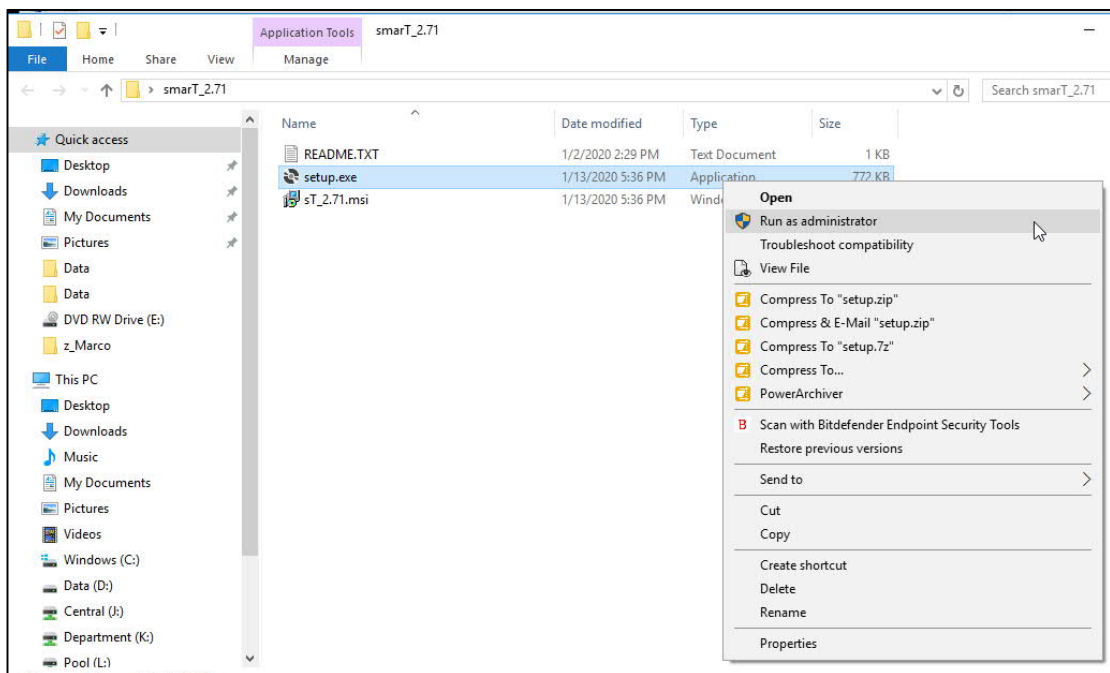


Fig. 2

- 3 In the following window that appears, enter the Administrator credential.
- 4 The following form (fig. 3) will appear to you. Click on the "Next" button to continue.

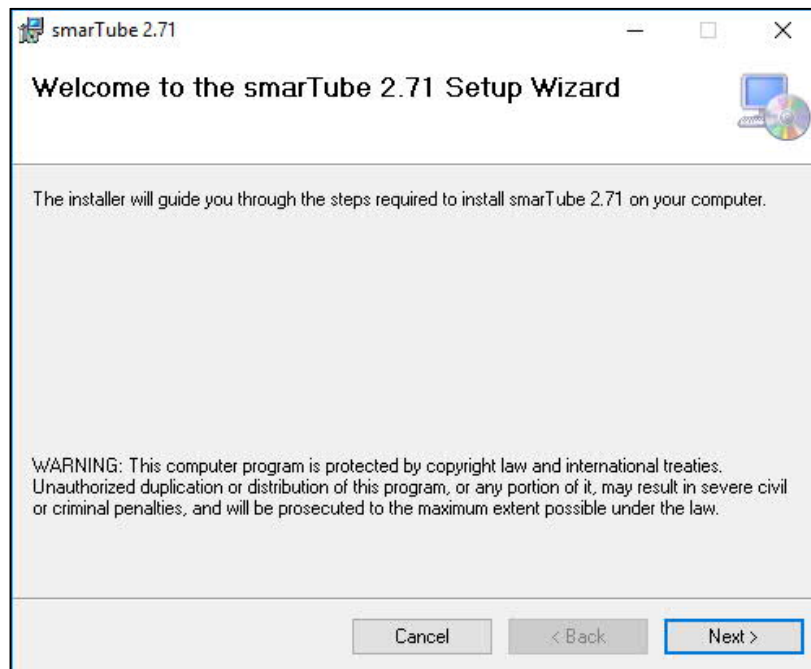


Fig. 3

- 5 In the following form, the License Agreement has to be accepted. After having read the License Agreement, select the option "I Agree" and then click on "Next" button.

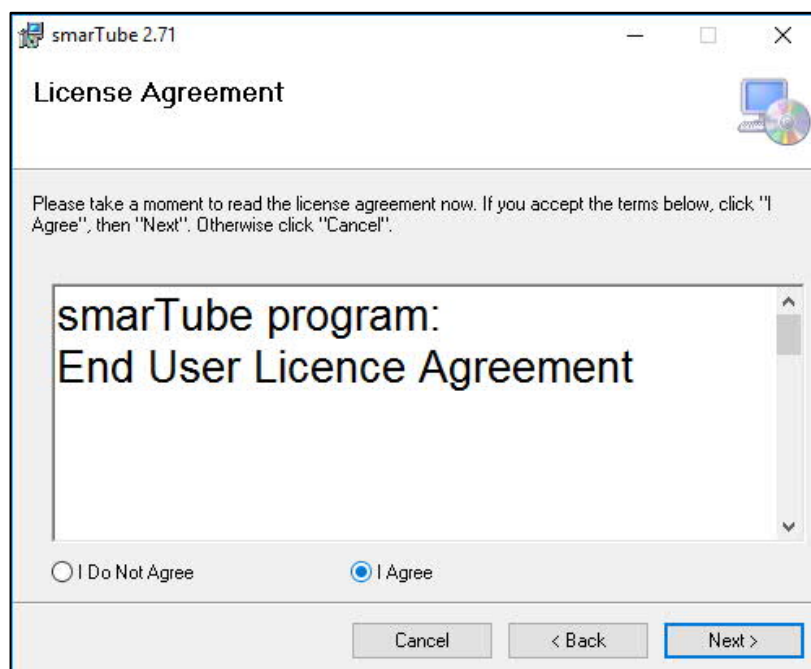
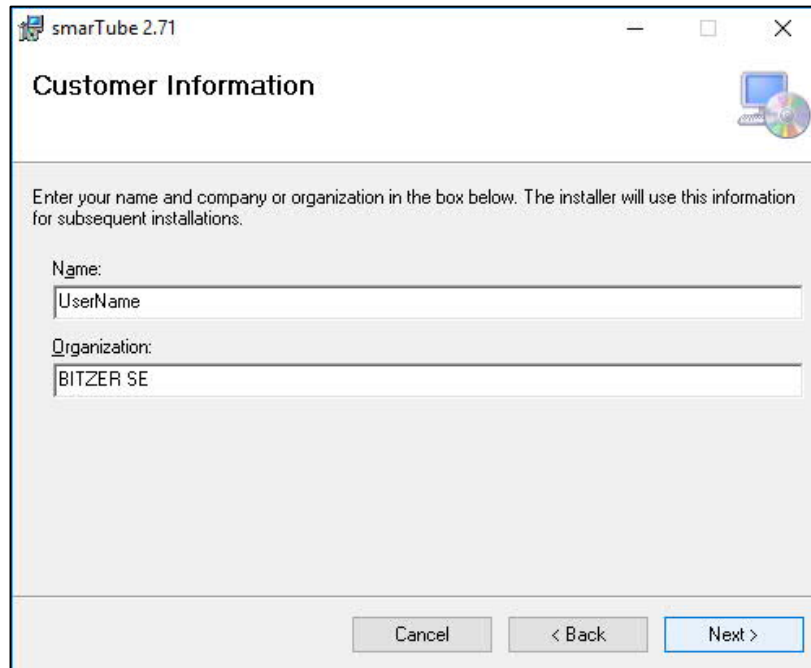


Fig. 4

- 6 Now, the following form will appear. Fill in the proper fields the required information and then click on the "Next" button.



The screenshot shows a Windows-style dialog box titled "smarTube 2.71" with a standard icon in the top-left corner. The main heading is "Customer Information" in bold. Below the heading is a small icon of a computer monitor and a CD. The text inside the dialog reads: "Enter your name and company or organization in the box below. The installer will use this information for subsequent installations." There are two text input fields. The first is labeled "Name:" and contains the text "UserName". The second is labeled "Organization:" and contains the text "BITZER SE". At the bottom of the dialog, there are three buttons: "Cancel", "< Back", and "Next >". The "Next >" button is highlighted with a blue border.

Fig. 5

- 7 In the following panel, the installation path can be chosen. To retain the default path is suggested. Click on the "Browse..." button if you want to change the installation path. The software can be installed for all the computer user or just for the one logged on. "Everyone" is the default choice. When the choices have been done, click on the "Next" button.

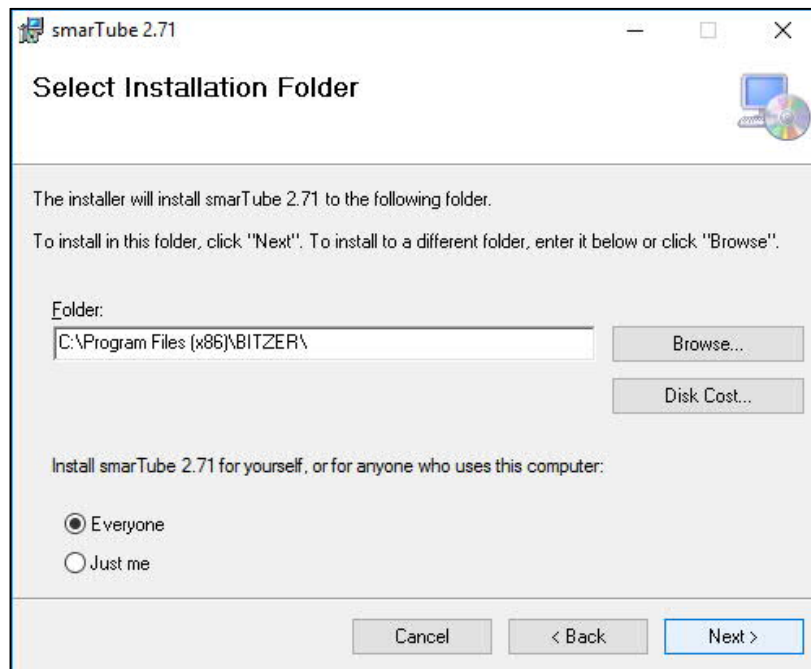


Fig. 6

- 8 In the following panel (fig. 7), the installation confirmation is asked. Click on the "Next" button to confirm and install the program.

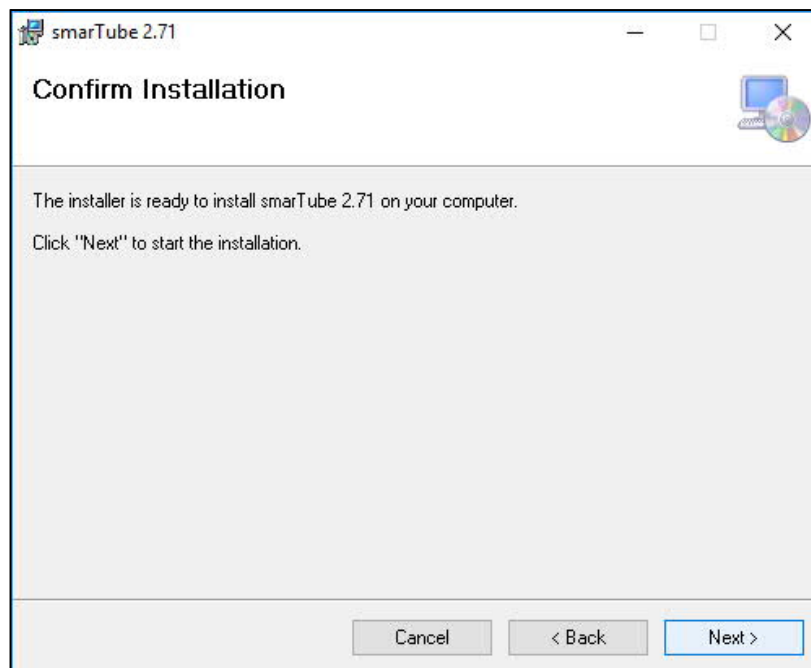


Fig. 7

- 9 A form with a progress status bar will be shown.
- 10 At the end, the following form will be shown. Click on the "Close" button to exit the Installation Procedure.
SmarTube is now ready for use. Restart procedure should not be necessary.

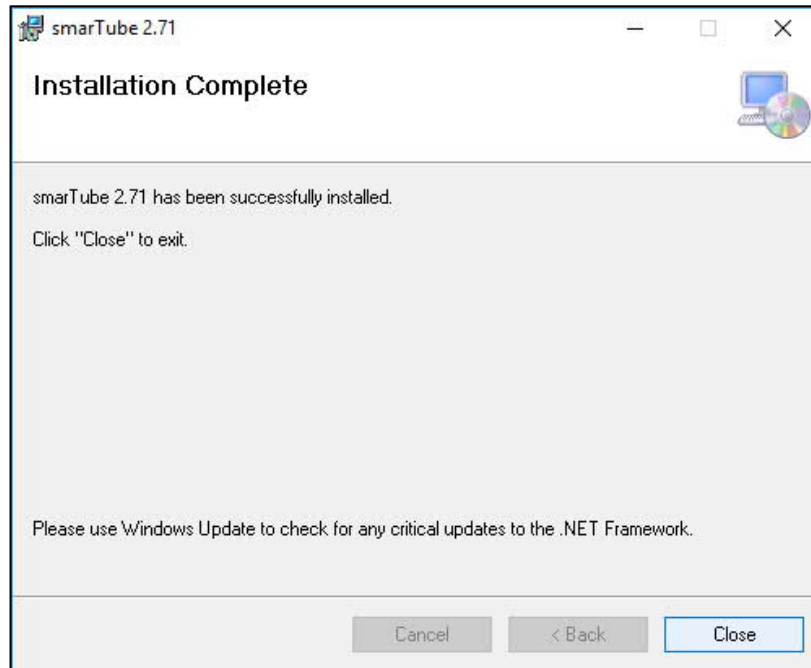


Fig. 8

UNINSTALLATION

- 1 From Start button, open the Control Panel (fig. 9)

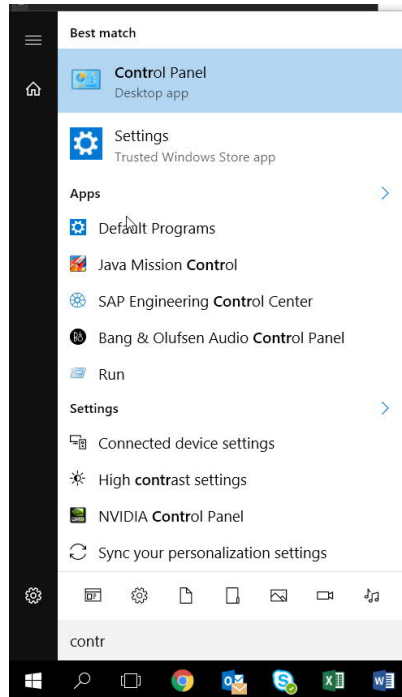


Fig. 9

- 2 In the Control Pane window, click on “Programs and Features” (fig. 10) or “Uninstall a program” below “Programs” (fig. 11).

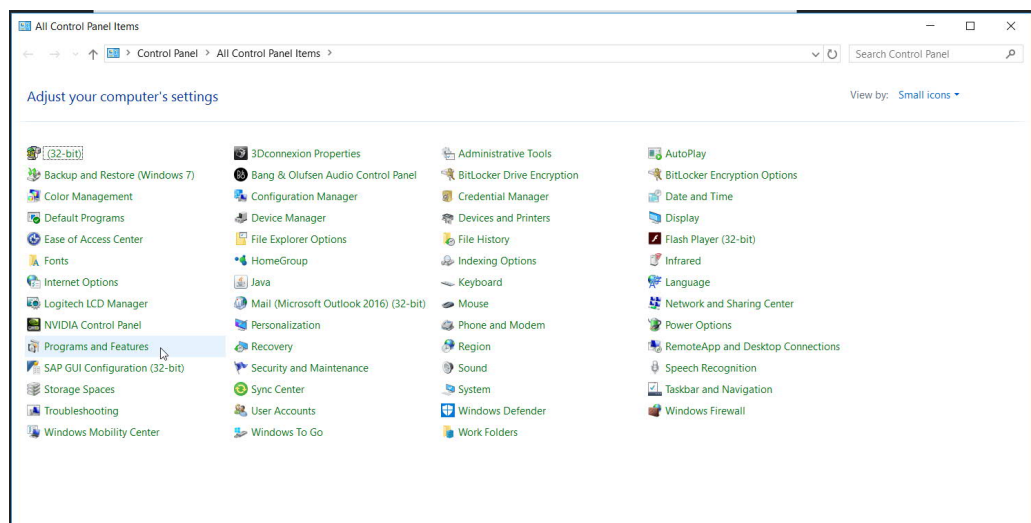


Fig. 10

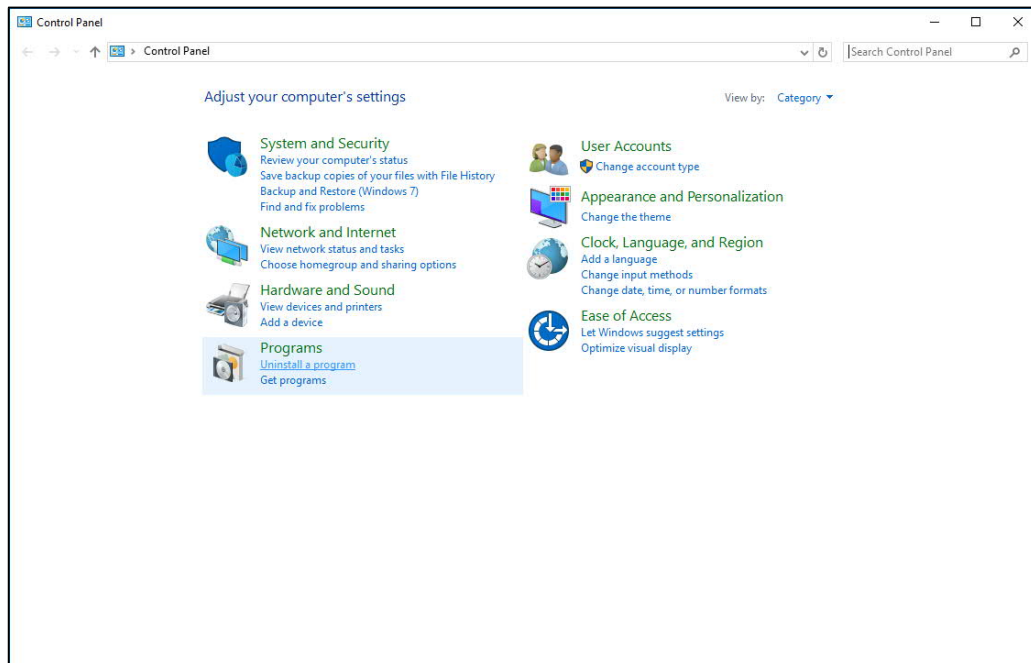


Fig. 11

- 3 The following form (fig. 12) will appear to you. Select smarTube 2.71 in the list and click on the "Uninstall" button.

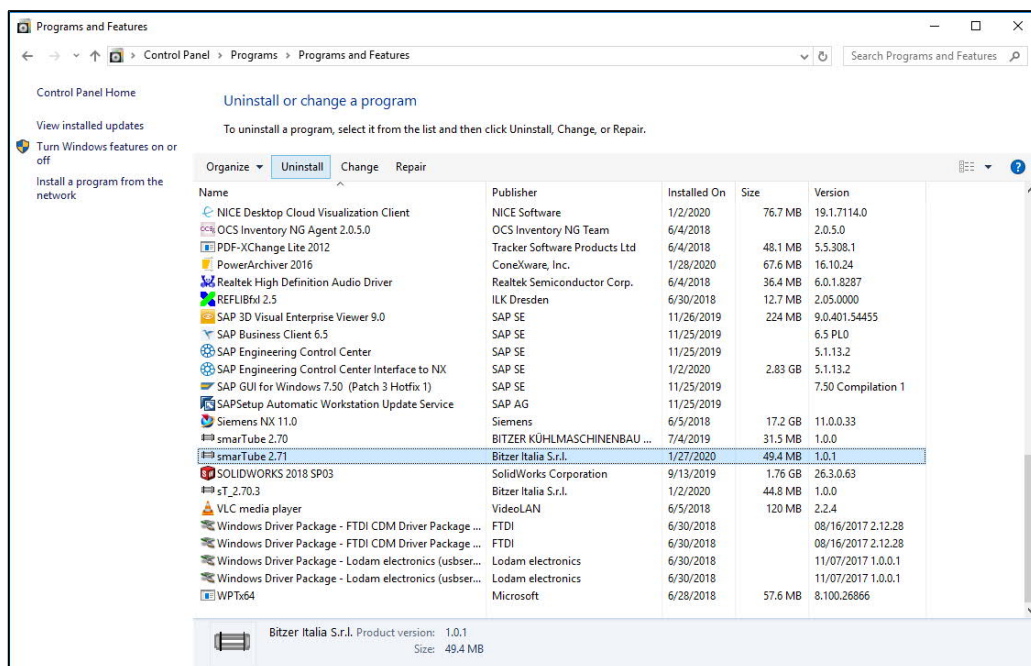


Fig. 12

- 4 In the following panel (fig. 13), the uninstallation confirmation is asked. Click on the “Yes” button to confirm and uninstall the program.

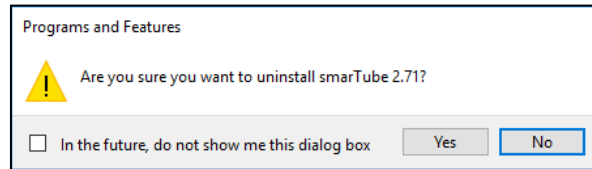


Fig. 13

- 5 The following form appears (fig. 14):

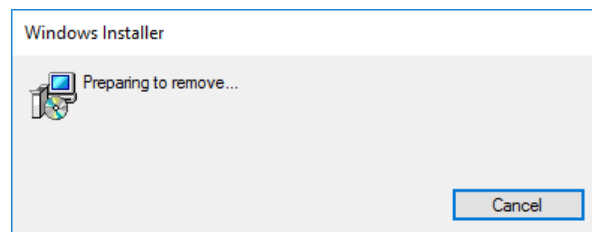


Fig. 14

- 6 In the following window that appears, enter the Administrator credential.
7 SmarTube is removed.