



## **SmarTube 2.80 Installation Manual**

Barbierato Marco

Thermal Analyst - Technology Dept. - Heat Exchanger and Pressure Vessels

2025.10.29

Revision: 0: 2025.10.29

### **INDEX**

INTRODUCTION .....	1
INSTALLATION .....	2
UNINSTALLATION .....	6

### **INTRODUCTION**

**SmarTube** is a calculation tool for Thermal selection (design/rating mode) of BITZER Shell and Tube Evaporators and Condensers operating in Air Conditioning and Refrigeration applications.

#### **Notes:**

- “administrator privileges” should not be required to install / uninstall the program;
- the default installation path does not requires administrator privileges for writing in the installed folder;
- anyhow, the User should be granted with the right to write in the installed folder, otherwise the program could not work properly.

## INSTALLATION

- 1 If you received the program in a .zip format, unzip the files in a temporary working folder on your pc.
- 2 In that folder, you should see the files listed in the picture below (fig. 1). Double-left-click on “**setup.exe**” to execute the installation program.

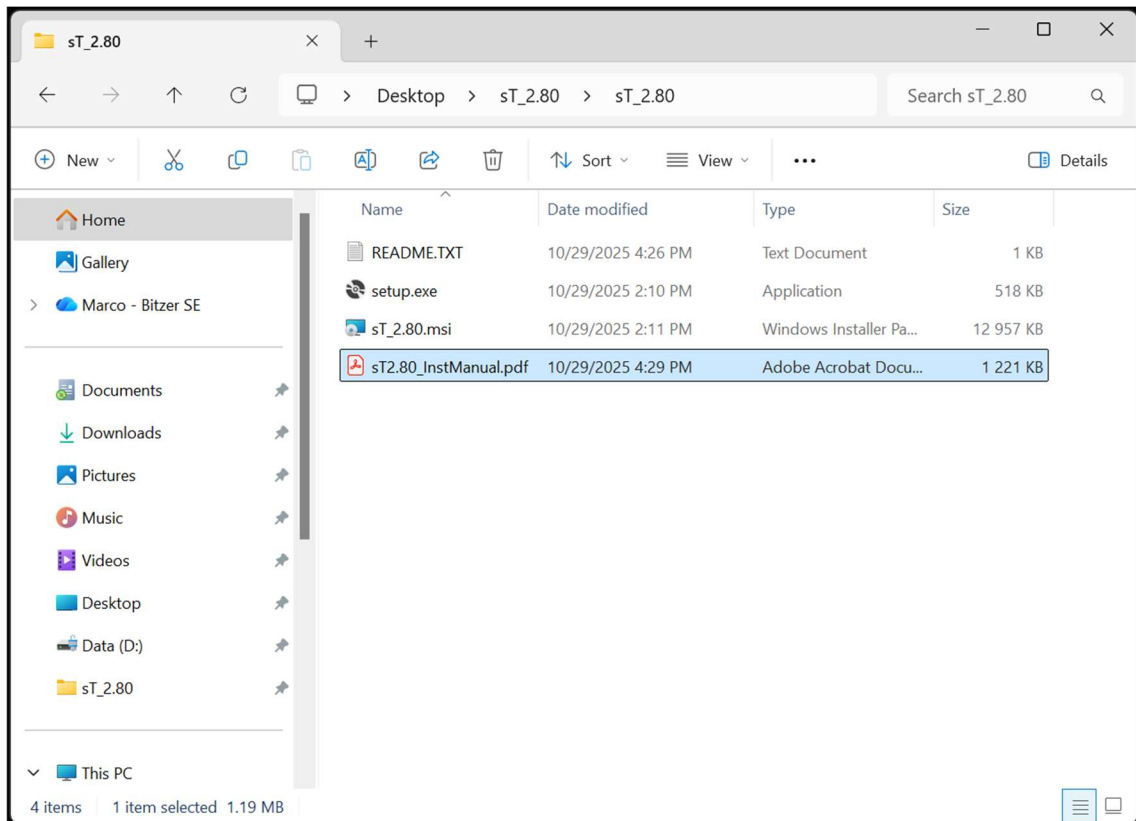


Fig. 1

- 3 The following form (fig. 2) will appear to you. Click on the “**Next**” button to continue.

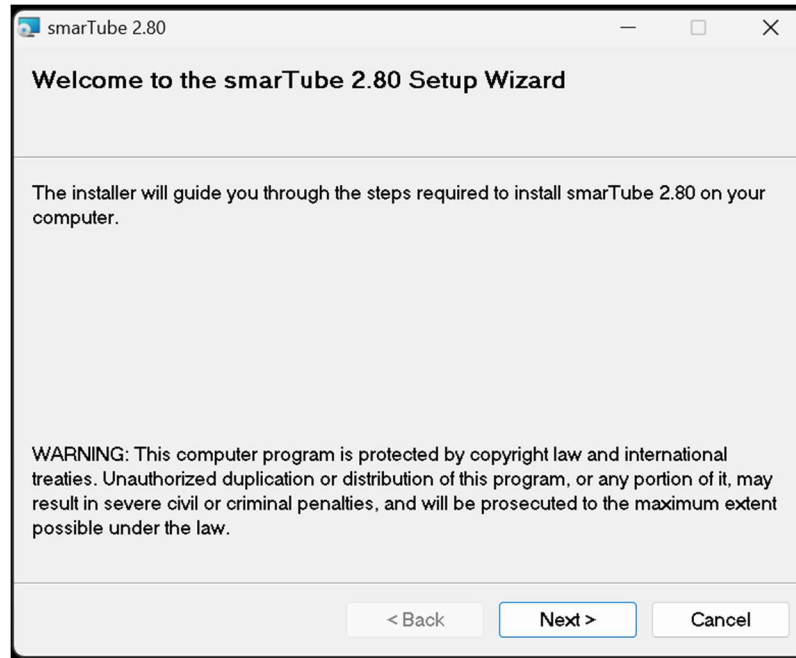


Fig. 2

- 4 In the following form (fig. 3), the License Agreement has to be accepted. After having read the License Agreement, select the option “**I Agree**” and then click on “**Next**” button.

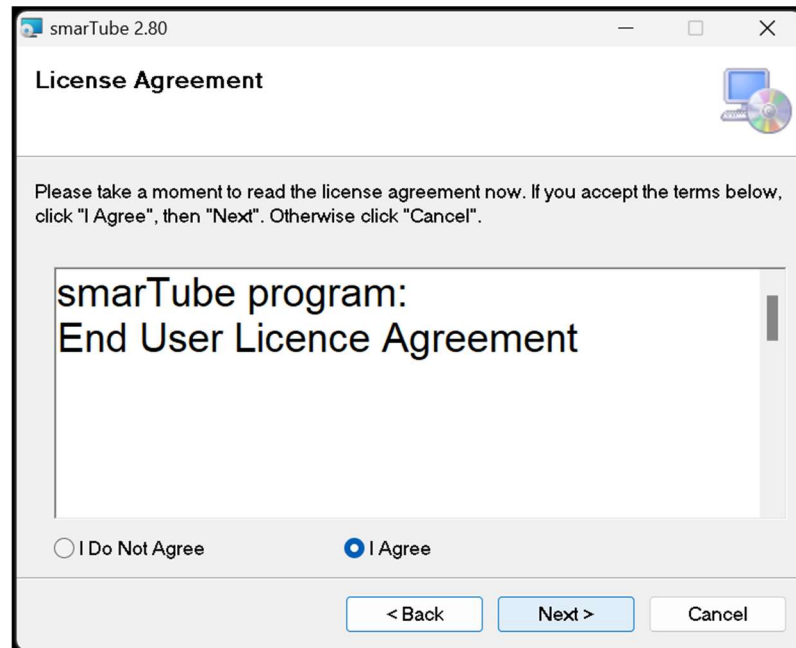


Fig. 3

- 5 In the following panel (fig. 4), the installation path can be chosen. To retain the default path is suggested.
- Click on the “**Browse...**” button if you want to change the installation path.

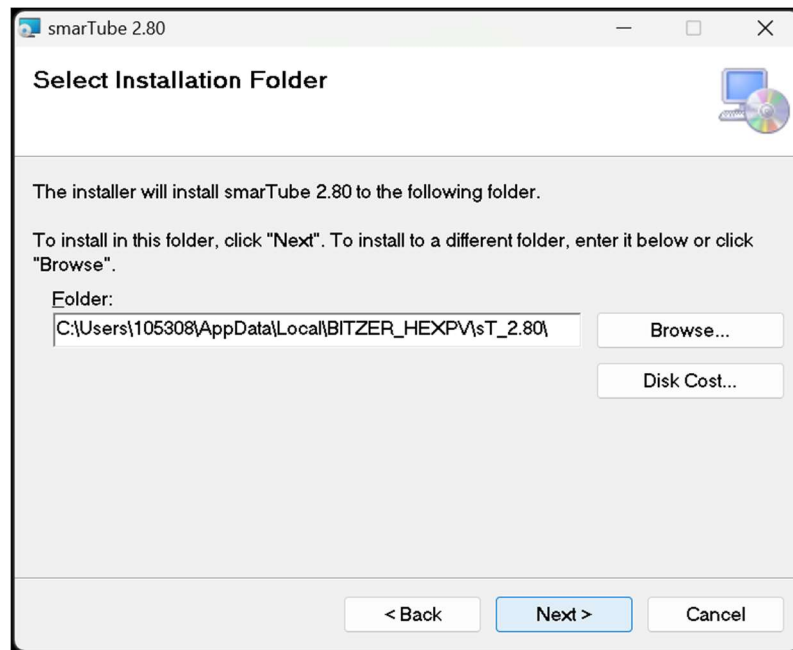


Fig. 4

- 6 In the following panel (fig. 5), the installation confirmation is asked. Click on the “Next” button to confirm and install the program.

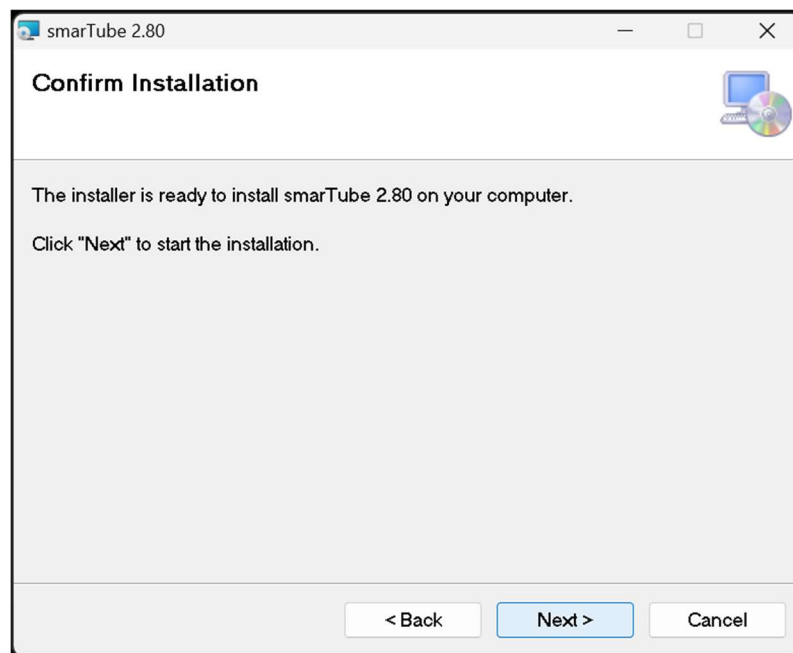


Fig. 5

- 7 A form with a progress status bar will be shown.
- 8 At the end, the following form will be shown (fig. 6). Click on the “**Close**” button to exit the Installation Procedure.  
SmarTube is now ready for use. Restart procedure should not be necessary.

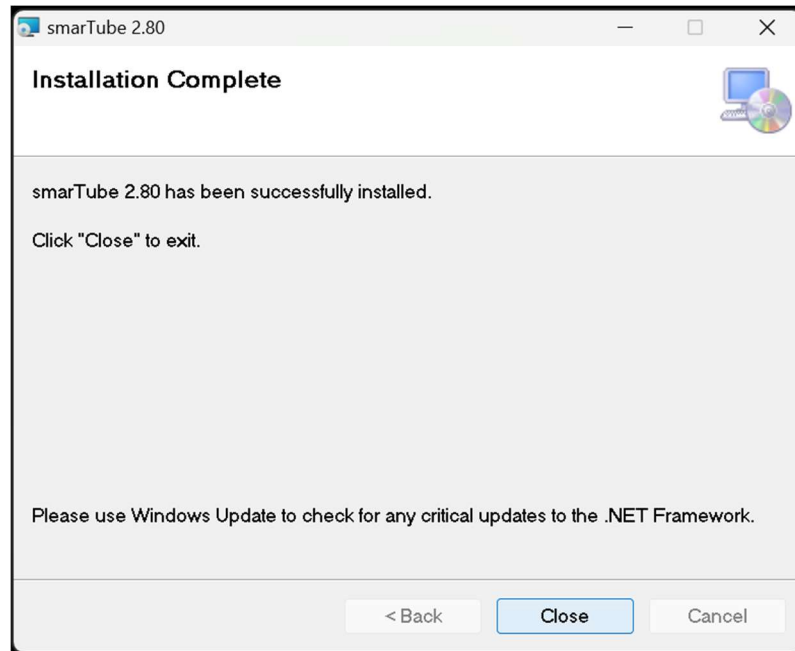


Fig. 6

## UNINSTALLATION

- 1 From Start button, open the Control Panel (fig. 7)

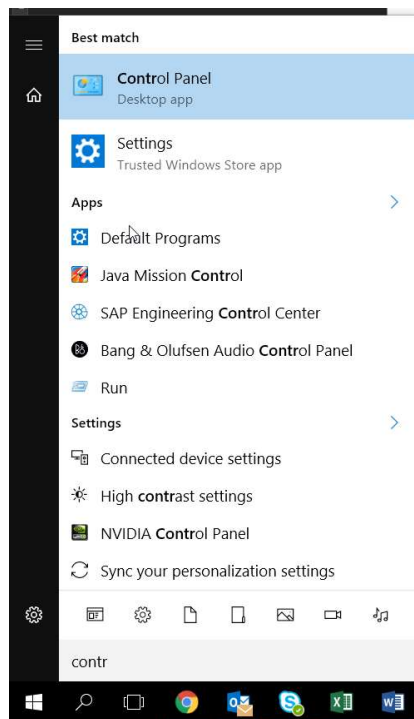


Fig. 7

- 2 In the Control Pane window, click on “Programs and Features” (fig. 8) or “Uninstall a program” below “Programs” (fig. 9).

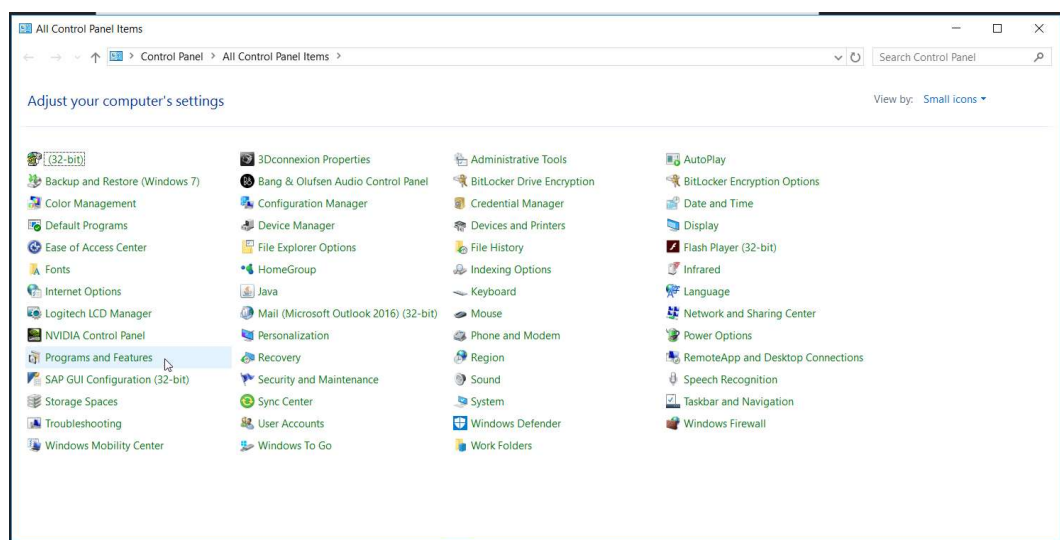


Fig. 8

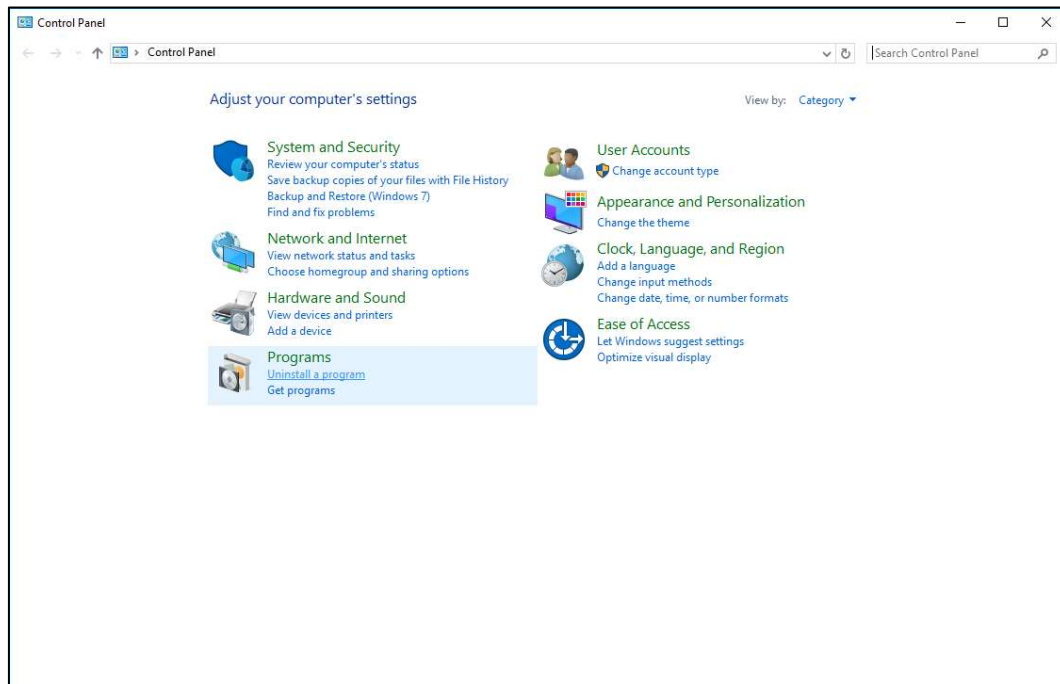


Fig. 9

- The following form (fig. 10) will appear to you. Select smarTube 2.80 in the list and click on the **"Uninstall"** button on top of the program list.

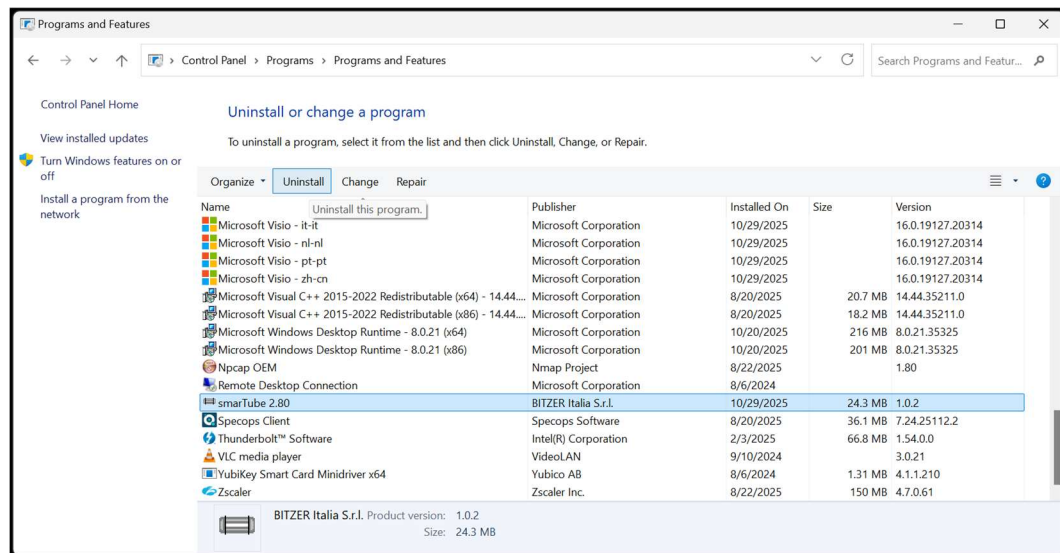


Fig. 10

- 4 In the following panel (fig. 11), the uninstallation confirmation is asked. Click on the “**Yes**” button to confirm and uninstall the program.

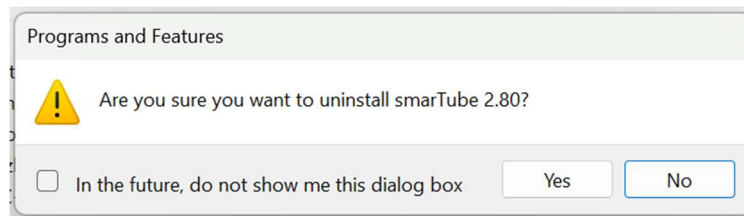


Fig. 11

- 5 A progress bar window could be shown; it will disappear when the uninstallation is complete.
- 6 SmarTube is removed.